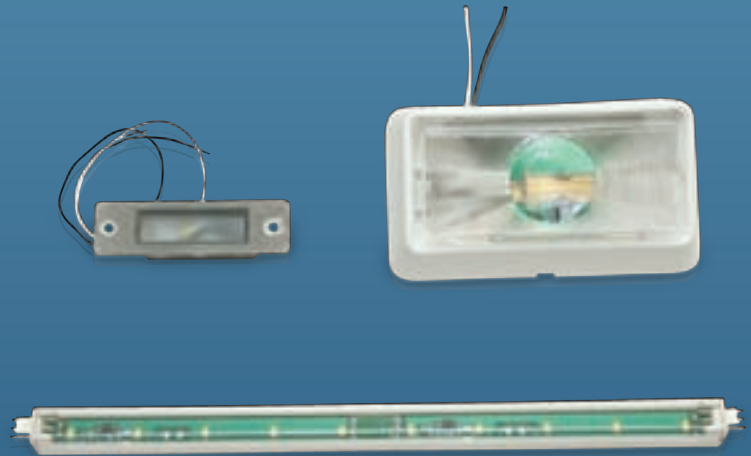


LED LIGHTING ~A Green Solution

PWI has been in business for over 45 years and been serving general aviation as its primary market. PWI currently has orders/contracts with all the aircraft manufactures in Wichita: Cessna, Bombardier Aerospace, Hawker Beechcraft, and Boeing.

PWI manufactures a complete line of LED Lighting products serving a wide range of lighting applications. PWI uses state of the art LEDs and driver technology to produce energy efficient and cost effective lighting solutions. Our products are designed to provide both direct and indirect lighting for Aviation, Transportation, Residential and Commercial markets.

- » Operating Voltage: 18 VDC to 32 VDC
- » Light Output: <5 foot candles at 3 feet
- » Current Draw: .15 amps at 12 inches
- » Operating Temperature: >110° F
- » Color Rendering Index: <80CRI
- » Low level of conducted RF emissions
- » Easy installation
- » Can be configured to a 6 inch strip
- » Four stage dimming available
- » Designed with Phillips LEDs
- » Color Temperatures available between 3K and 5K Kelvin
- » Individual LED strips can be interconnected to make a continuous lighting effect

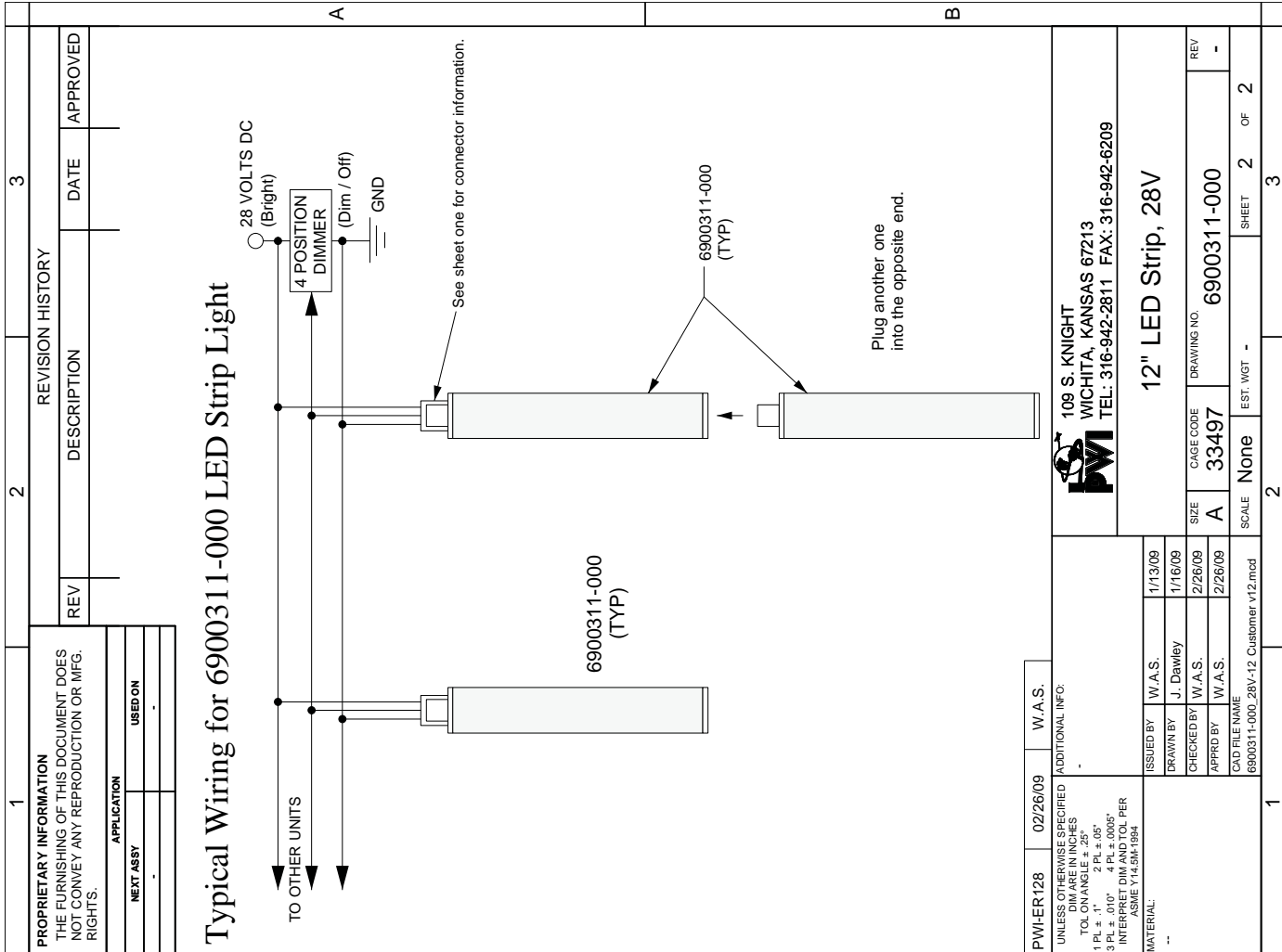


» PWI has spent the past 4 years working with LED manufactures and new LED products to develop a LED lighting product with equivalent lighting characteristic of fluorescent lights. This new LED lighting product is available in 6" and 12" lengths. Custom configurations upon request.

» PWI's LED lights have uniform CRI (Color Rendering Index), light output, and color temperature. They operate cooler and with less power than other LED lighting systems.

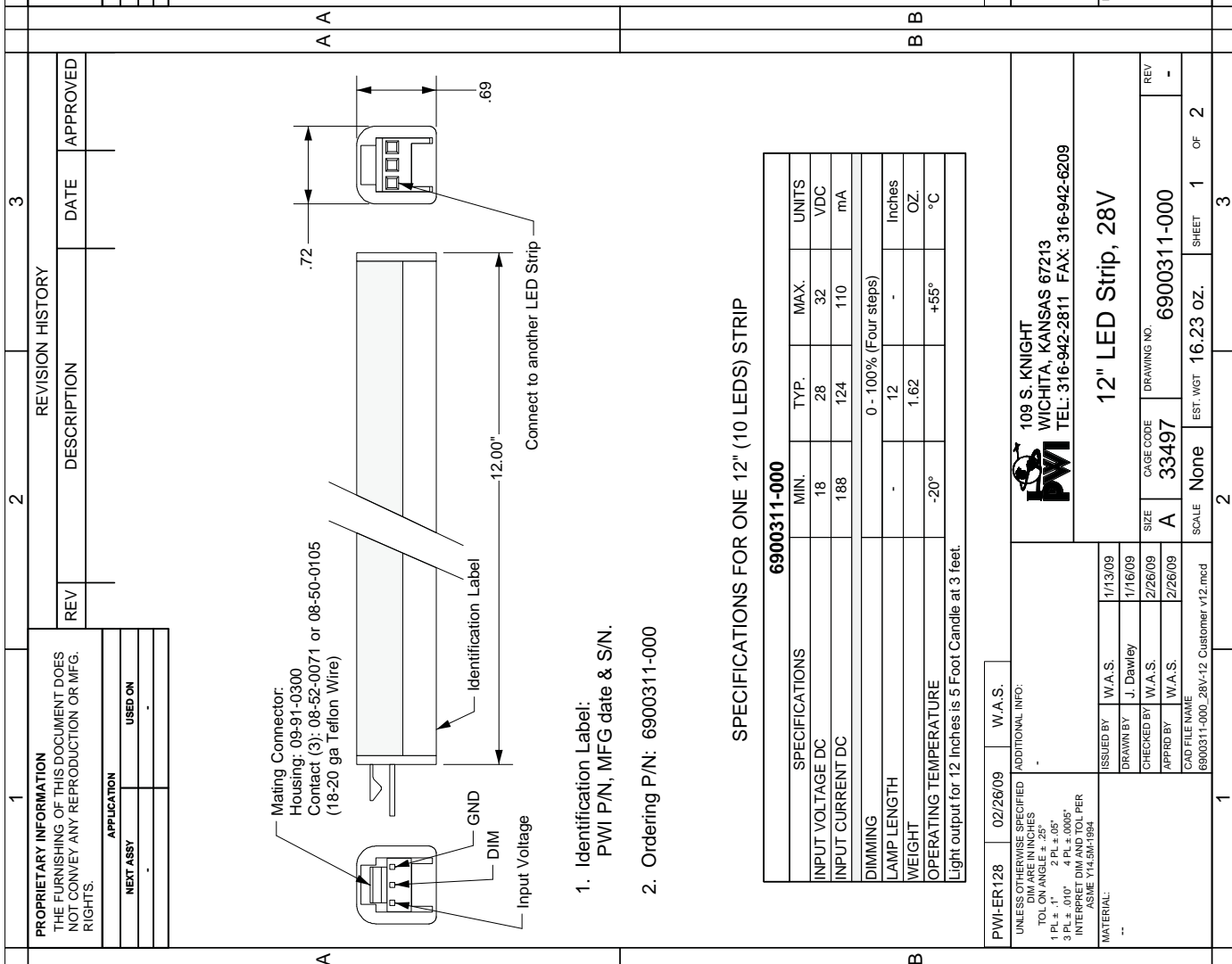
» The price for PWI LED lights will wholesale 30-40% less than other LED lighting systems on the market.





Typical Wiring for 6900311-000 LED Strip Light

PROPRIETARY INFORMATION THE FURNISHING OF THIS DOCUMENT DOES NOT CONVEY ANY REPRODUCTION OR MFG. RIGHTS.		REVISION HISTORY REV DESCRIPTION DATE APPROVED
APPLICATION NEXT ASSY USED ON		



1. Identification Label:
PWI P/N, MFG date & S/N.
2. Ordering P/N: 6900311-000

SPECIFICATIONS FOR ONE 12" (10 LEDS) STRIP

SPECIFICATIONS	MIN.	TYP.	MAX.	UNITS
INPUT VOLTAGE DC	18	28	32	VDC
INPUT CURRENT DC	188	124	110	mA
DIMMING	0 - 100% (Four steps)			
LAMP LENGTH	12 Inches			
WEIGHT	1.62 OZ.			
OPERATING TEMPERATURE	-20° +55° °C			

Light output for 12 Inches is 5 Foot Candle at 3 feet.

PWI-ER128	02/26/09	W.A.S.	109 S. KNIGHT WICHITA, KANSAS 67213 TEL: 316-942-2811 FAX: 316-942-6209	
UNLESS OTHERWISE SPECIFIED DIM ARE IN INCHES TOL ON ANGLE ± .25° 1 PL ± .1" 2 PL ± .05" 3 PL ± .005" 4 PL ± .0005" INTERPRET DIM AS PER ASME Y14.5M-1994			12" LED Strip, 28V	
MATERIAL: --			ISSUED BY W.A.S. 1/13/09 DRAWN BY J. Dawley 1/16/09 CHECKED BY W.A.S. 2/26/09 APPR'D BY W.A.S. 2/26/09	CAGE CODE DRAWING NO. 33497 6900311-000
CAD FILE NAME 6900311-000_28V-12 Customer v12.mcd			SCALE EST. WGT None 16.23 oz.	SHEET 1 OF 2